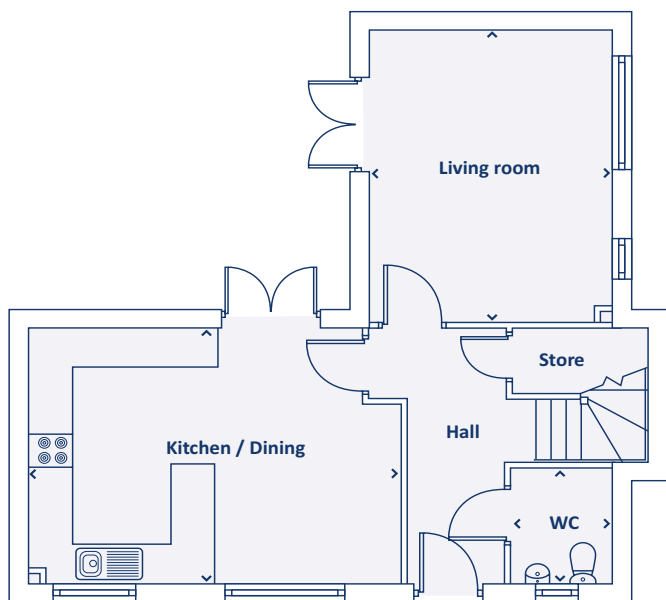


Three bedroom home

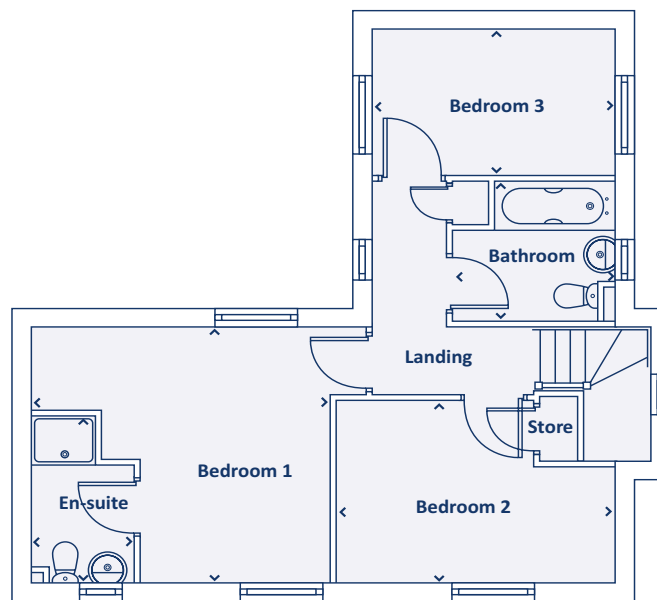


**The Hebden**  
at Canterbury Park



## Ground floor

Kitchen / Dining room	4.95m x 3.95m   16'2" x 12'9"
Living room	4.51m x 3.50m   14'8" x 11'5"
W.C.	1.80m x 1.43m   5'9" x 4'7"



## First floor

Bedroom 1	4.40m x 3.95m   14'4" x 12'9"
Bedroom 2	4.06m x 2.80m   13'3" x 9'2"
Bedroom 3	3.50m x 2.25m   11'5" x 7'4"
Bathroom	2.33m x 2.14m   7'7" x 7'0"
En-suite	2.54m x 1.47m   8'3" x 4'8"



0151 290 7891



info@livvhomes.com



livvhomes.com



Computer generated images and floor plans are for illustrative purposes only. They depict a typical layout and style of the individual plot, and do not constitute a contract, part of a contract or warranty. Features and finishes vary from plot to plot. For exact plot specifications please contact our sales team. All dimensions are approximate and you should undertake your own measurements before ordering any flooring, fixtures, fittings or furniture.

**Livv**  
homes