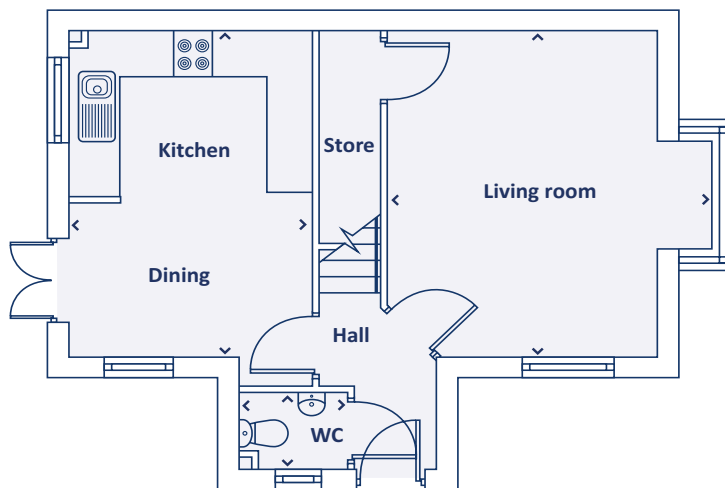


Three bedroom home

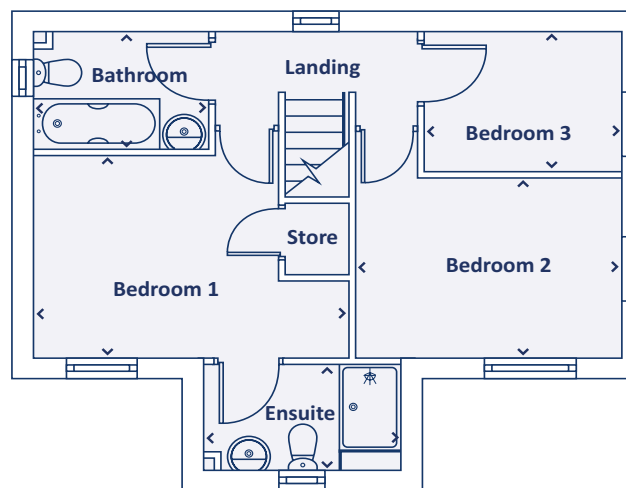


The Sinderby
at Canterbury Park



Ground floor

Kitchen / Dining room	4.06m x 3.20m 13'3" x 10'5"
Living room	4.20m x 4.06m 13'8" x 13'3"
W.C.	1.45m x 1.05m 4'8" x 3'5"



First floor

Bedroom 1	4.15m x 2.83m 13'6" x 9'3"
Bedroom 2	3.53m x 2.50m 11'6" x 8'2"
Bedroom 3	2.57m x 1.92m 8'4" x 6'3"
Bathroom	2.29m x 1.59m 7'5" x 5'2"
En-suite	2.61m x 1.48m 8'6" x 4'9"



0151 290 7891



info@livvhomes.com



livvhomes.com



Computer generated images and floor plans are for illustrative purposes only. They depict a typical layout and style of the individual plot, and do not constitute a contract, part of a contract or warranty. Features and finishes vary from plot to plot. For exact plot specifications please contact our sales team. All dimensions are approximate and you should undertake your own measurements before ordering any flooring, fixtures, fittings or furniture.

Livv
homes