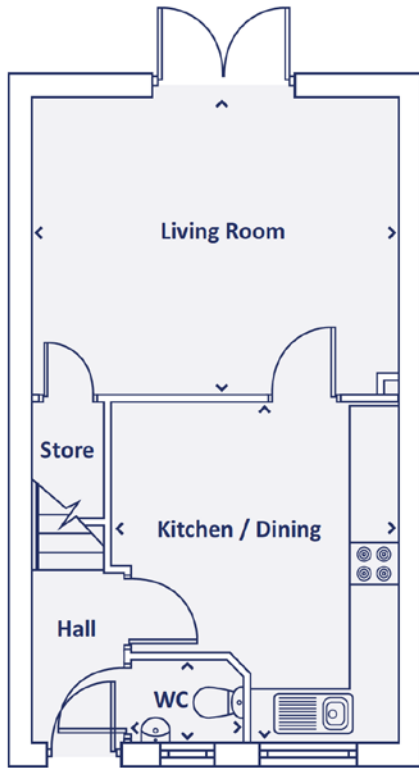


**Livv**  
homes

Three bedroom home

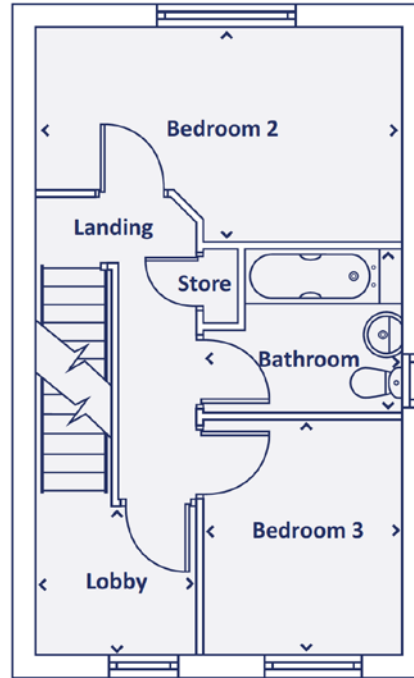


The Kepwick  
at Canterbury Park



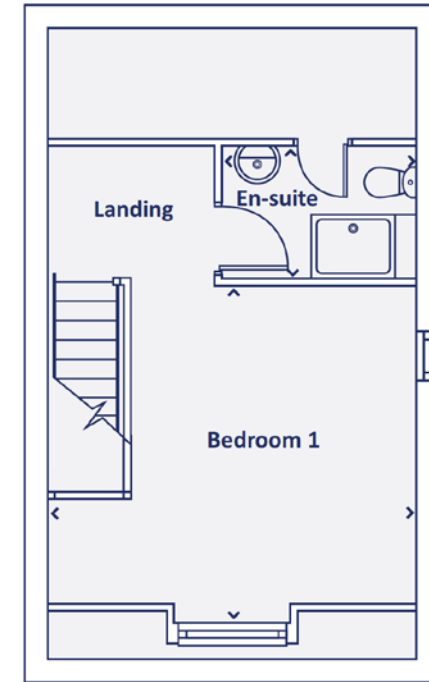
## Ground floor

Kitchen / Dining	4.10m x 3.54m   13'4" x 11'6"
Living room	3.58m x 4.50m   11'7" x 14'8"
W.C	1.01m x 1.41m   3'3" x 4'6"



## First floor

Bedroom 2	2.67m x 4.50m   8'7" x 14'8"
Bedroom 3	2.88m x 2.47m   9'5" x 8'1"
Lobby	1.78m x 1.94m   5'8" x 6'4"
Bathroom	2.03m x 2.47m   6'7" x 8'1"



## Second floor

Master Bedroom	4.22m x 4.50m   13'8" x 14'8"
En-suite	1.66m x 2.37m   5'4" x 7'8"

 0151 290 7891

 [info@livvhomes.com](mailto:info@livvhomes.com)

 [livvhomes.com](http://livvhomes.com)



Computer generated images and floor plans are for illustrative purposes only. They depict a typical layout and style of the individual plot, and do not constitute a contract, part of a contract or warranty. Features and finishes vary from plot to plot. For exact plot specifications please contact our sales team. All dimensions are approximate and you should undertake your own measurements before ordering any flooring, fixtures, fittings or furniture.

**Livv**  
homes